

FUTURE MIGRATION
SCENARIOS FOR EUROPE



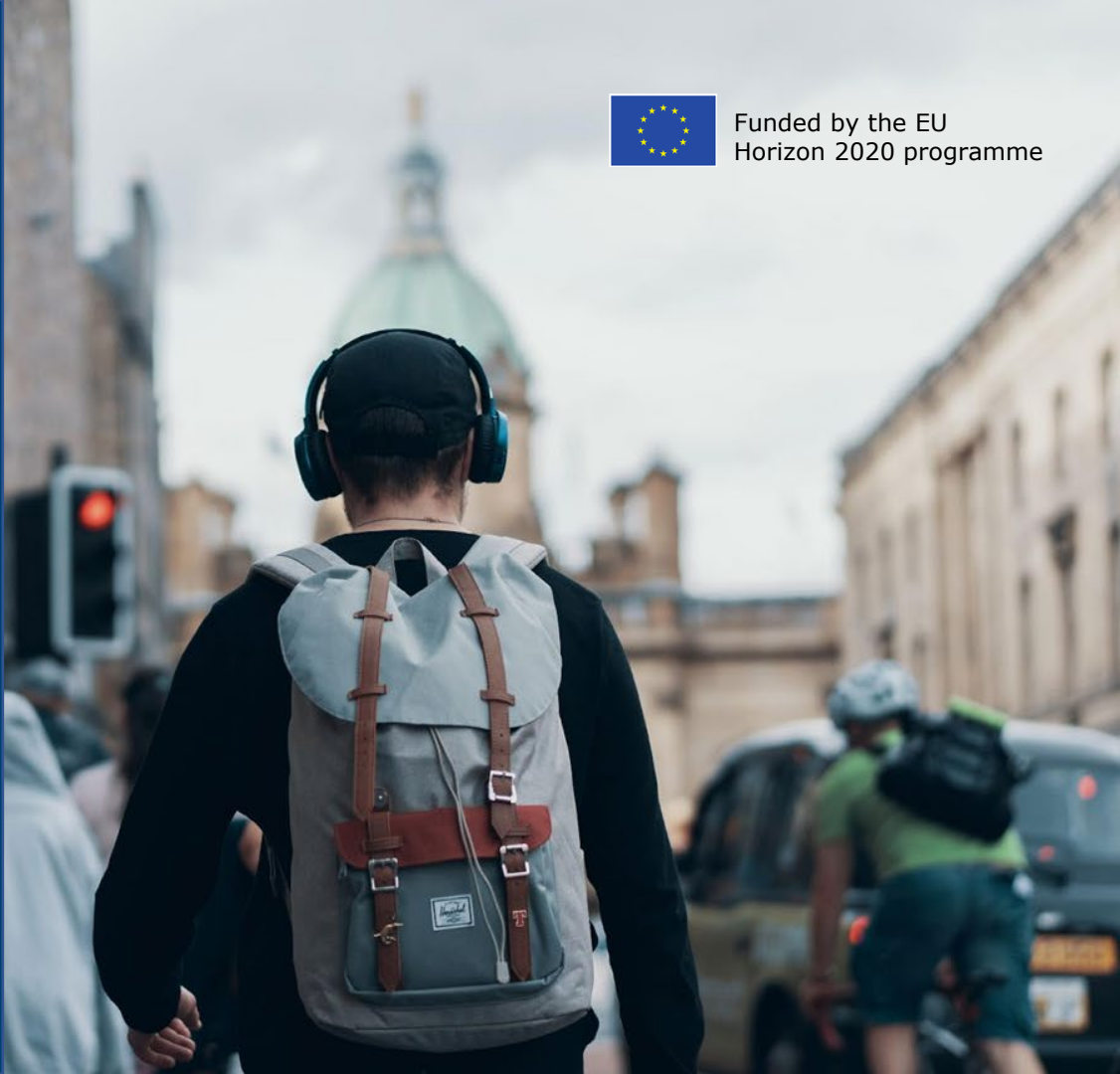
Funded by the EU
Horizon 2020 programme

Future Migration Scenarios for Europe

Samir KC

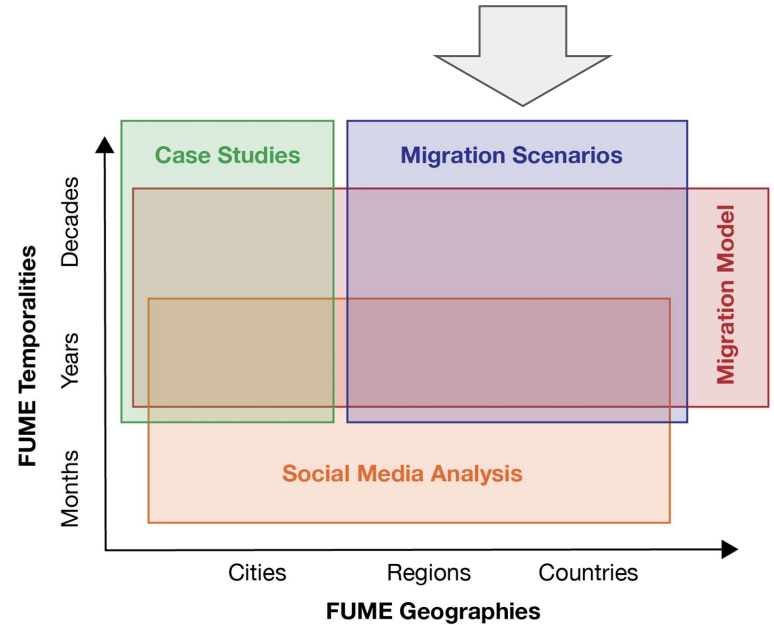
Orlando Olaya Bucaro

IIASA

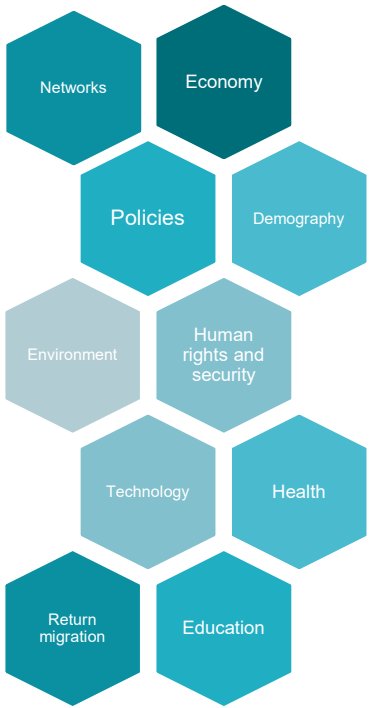


Migration Scenario Narratives

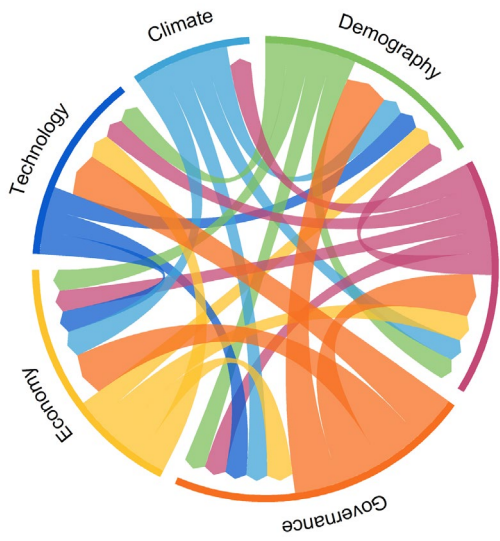
- **Migration Scenario Narratives** will provide the **qualitative reasoning** for FUME migration scenarios based on the qualitative and quantitative migration evidence as analyzed in **Drivers of International Migration report**, the **Delphi survey (policy makers)** and **expert survey (researchers)** using the methodology outlined in **Global Scenario Narratives report**.



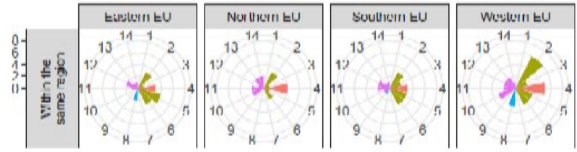
International migration drivers



Expert survey



Delphi survey



| SKILLED | | | | | | LOW SKILLED | | | | | |
|--------------------|------------|-------------|-------------|------------|-------|--------------------|------------|-------------|-------------|------------|-------|
| Origin/Destination | Eastern EU | Northern EU | Southern EU | Western EU | Total | Origin/Destination | Eastern EU | Northern EU | Southern EU | Western EU | Total |
| Eastern EU | 3% | 10% | 3% | 19% | 35% | Eastern EU | 4% | 11% | 13% | 19% | 47% |
| Northern EU | 2% | 7% | 3% | 2% | 14% | Northern EU | 2% | 4% | 4% | 4% | 14% |
| Southern EU | 2% | 17% | 2% | 15% | 36% | Southern EU | 0% | 7% | 2% | 19% | 28% |
| Western EU | 2% | 5% | 2% | 7% | 15% | Western EU | 0% | 6% | 4% | 4% | 13% |
| Total | 8% | 39% | 10% | 42% | | Total | 6% | 28% | 22% | 44% | |

| INTRA-EU MIGRATION PATHS | | | | | | INTRA-EU MIGRATION PATHS | | | | | |
|-------------------------------------|------------|-------------|-------------|------------|-------|-------------------------------------|------------|-------------|-------------|------------|-------|
| Origin/ Destination | Eastern EU | Northern EU | Southern EU | Western EU | Total | Origin/ Destination | Eastern EU | Northern EU | Southern EU | Western EU | Total |
| Asia | 1% | 7% | 1% | 13% | 23% | Asia | 5% | 5% | 8% | 5% | 22% |
| Balkans and Eastern Europe (non-EU) | 4% | 10% | 3% | 17% | 35% | Balkans and Eastern Europe (non-EU) | 6% | 5% | 5% | 9% | 25% |
| Latin America and the Caribbean | 0% | 0% | 7% | 0% | 7% | Latin America and the Caribbean | 0% | 0% | 6% | 2% | 8% |
| Middle East and North Africa | 0% | 1% | 6% | 4% | 12% | Middle East and North Africa | 0% | 0% | 8% | 8% | 15% |
| Northern America | 0% | 4% | 1% | 6% | 12% | Northern America | 0% | 3% | 0% | 3% | 6% |
| Sub-Saharan Africa | 0% | 3% | 6% | 3% | 12% | Sub-Saharan Africa | 0% | 0% | 12% | 12% | 25% |
| Total | 6% | 26% | 25% | 43% | | Total | 11% | 12% | 38% | 38% | |

2030-2050

Two possible futures for each domain

Demand for migrants in EU
Pressure to migrate in developing countries

2020-2030

Economic recovery

Impact of COVID-19 on migration policies



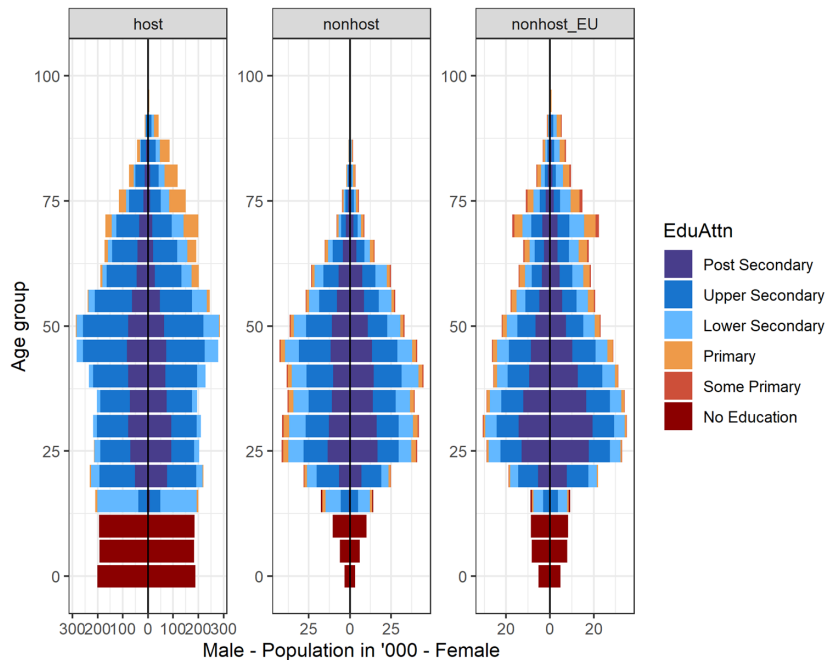
Population projections

- National
- Regional
- Local

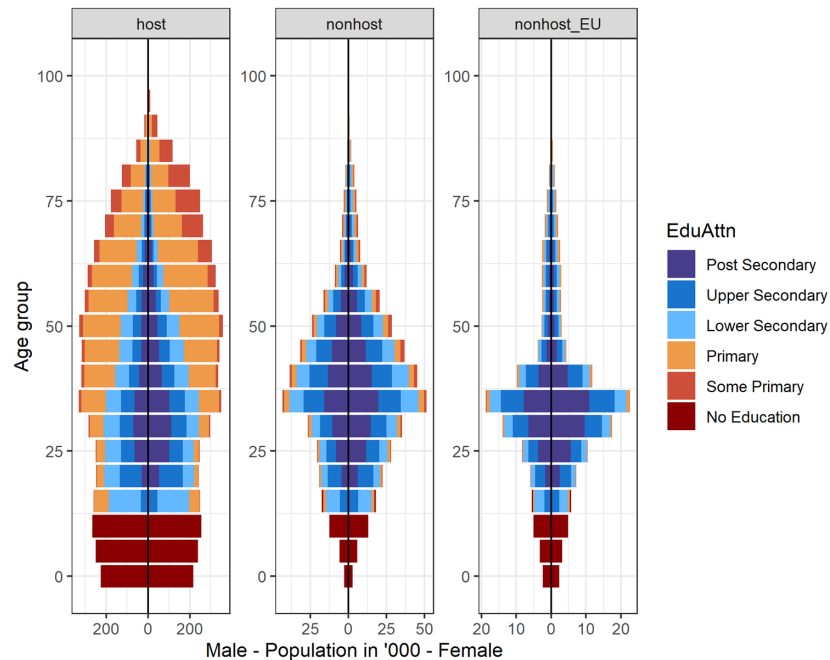


Population distribution by Country of Birth

AUT: Population Distribution by Country of Birth in 2015

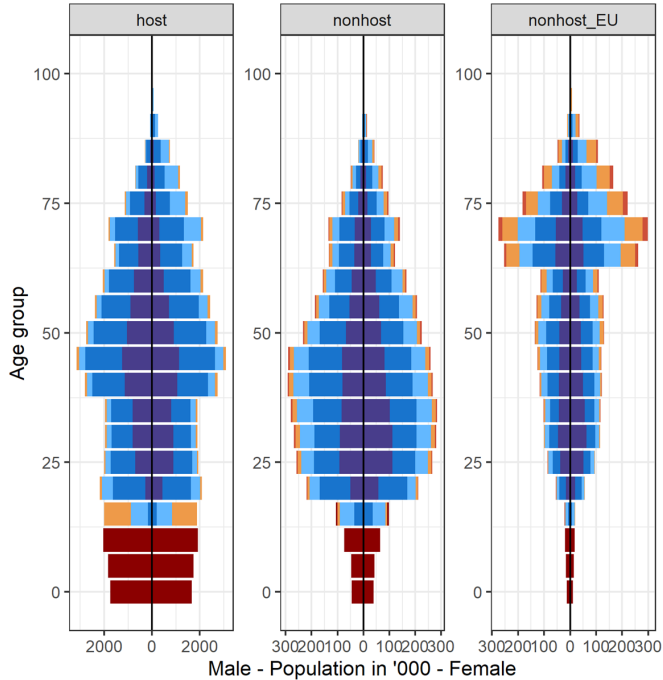


PRT: Population Distribution by Country of Birth in 2015

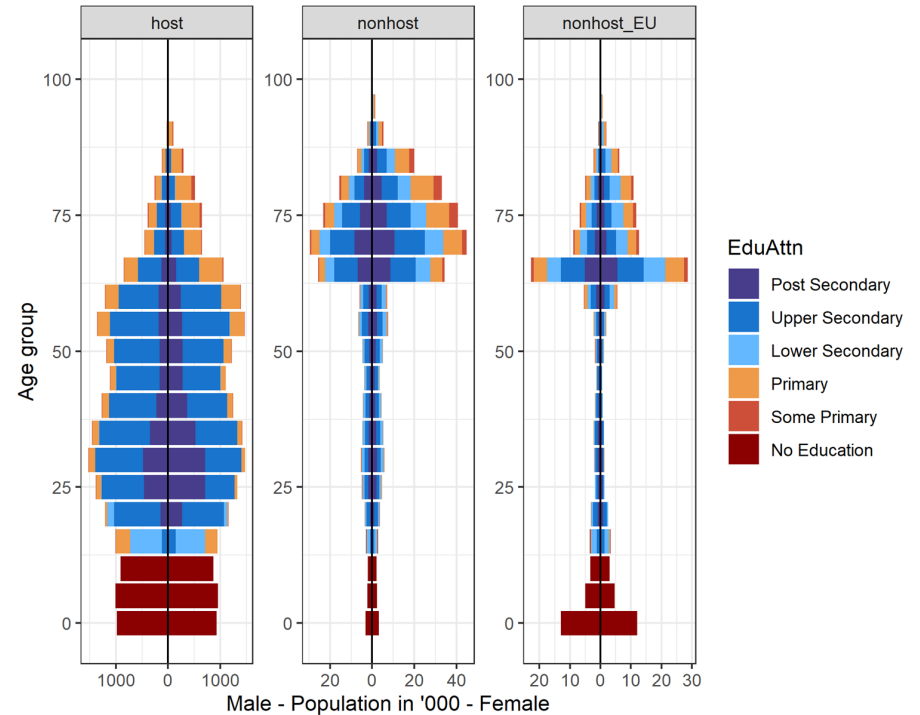


Population distribution by Country of Birth

DEU: Population Distribution by Country of Birth in 2015

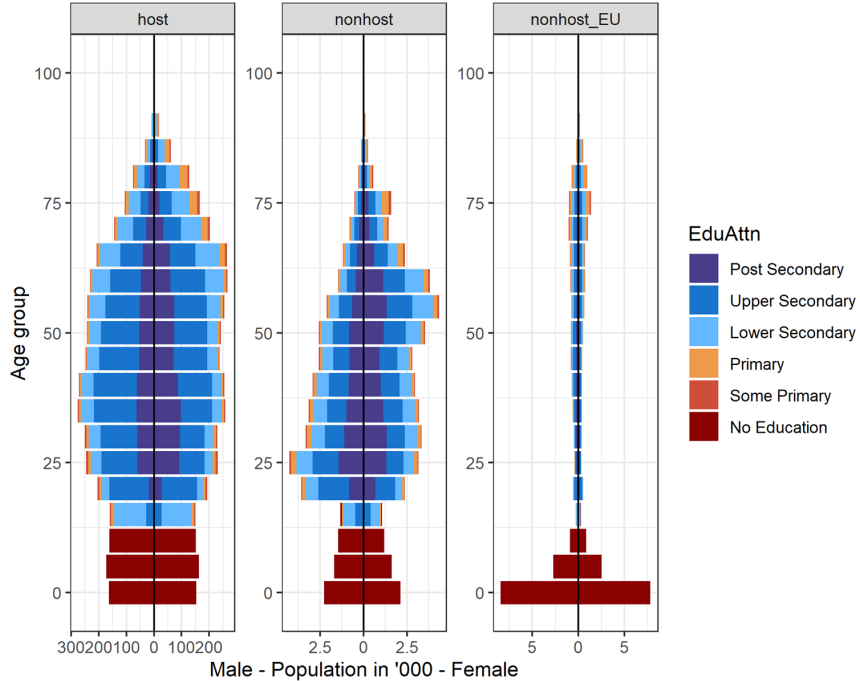


POL: Population Distribution by Country of Birth in 2015

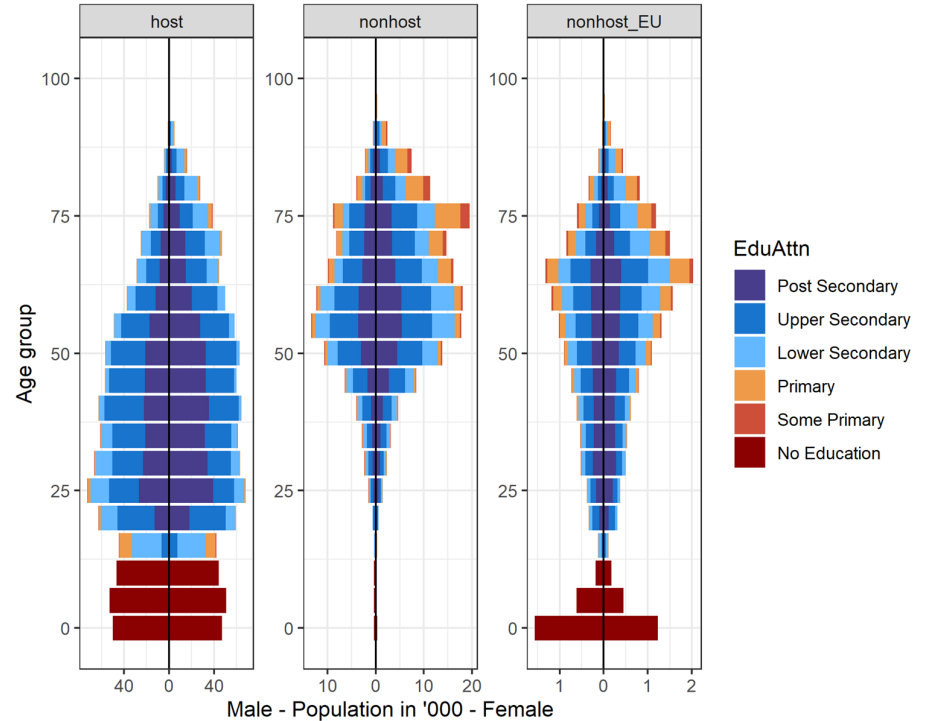


Population distribution by Country of Birth

BGR: Population Distribution by Country of Birth in 2015



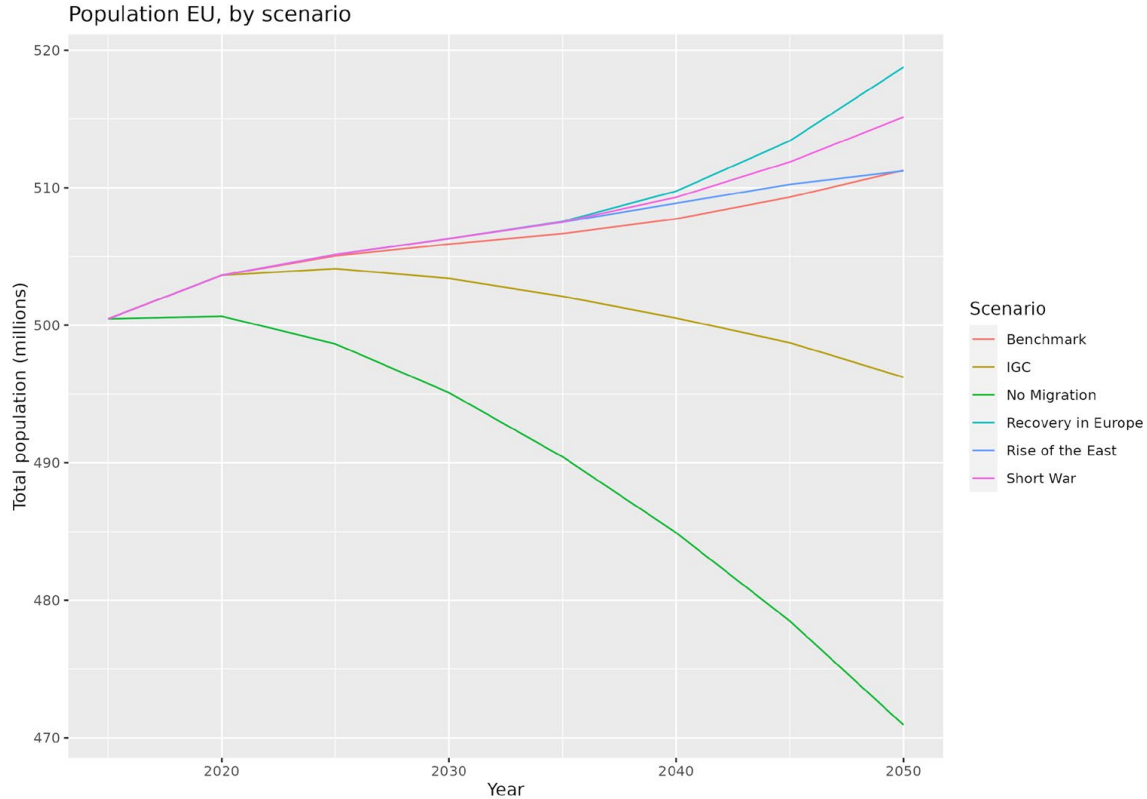
LVA: Population Distribution by Country of Birth in 2015



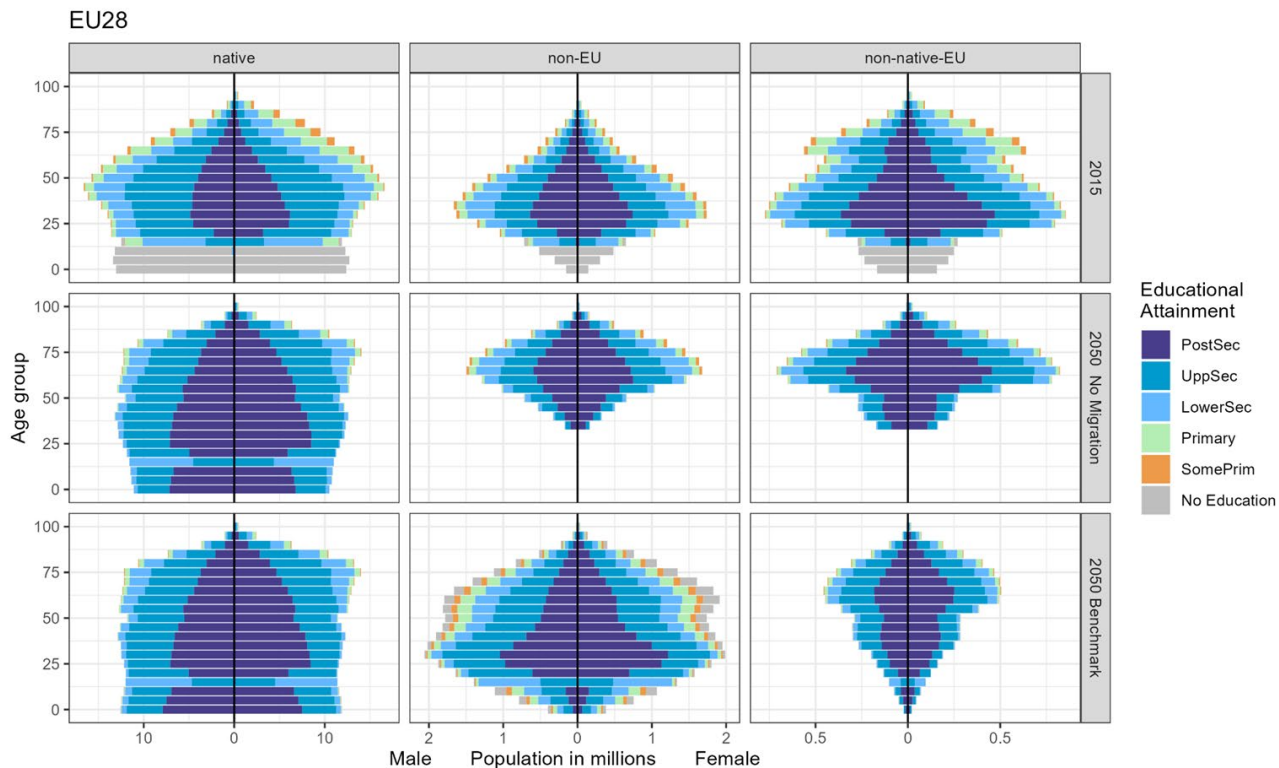
Migration scenarios

- **Benchmark:** Based on SSP2 (Koch & Leimbach, 2022), including COVID shock but not Ukraine war
- **Ukraine War:** IMF estimate until 2027, linear transition over 5 years back to SSP2 growth rates. Except Ukraine.
- **Recovery in Europe:** After 2027: European countries transition towards the SSP with highest growth rates; developing countries (including emerging economies) transition towards the SSP with lowest growth rates. All other countries (USA, Australia etc.) transition towards SSP2
- **Rise of the East:** Opposite to "Recovery in Europe": Europe transition towards the SSP with lowest growth rates; developing countries transition towards the SSP with highest growth rates
- **IGC (Intensifying Global Competition):** "Catch-up" behavior of less wealthy countries inspired by the "CAP" and "FAIR" GDP scenarios in Bodirsky et al., 2022
- **No Migration:** No international migration

Total population

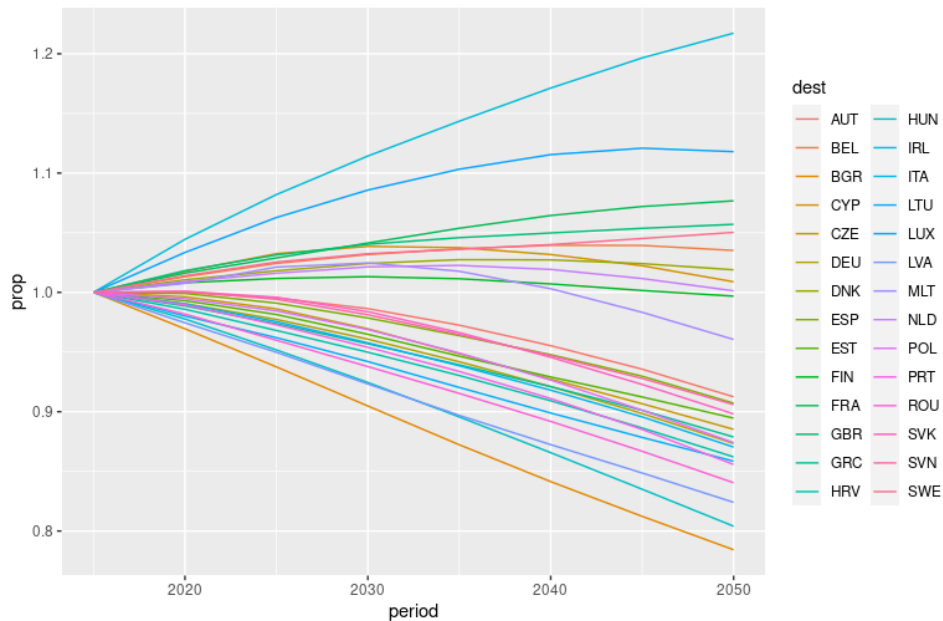


Overall Migration pattern

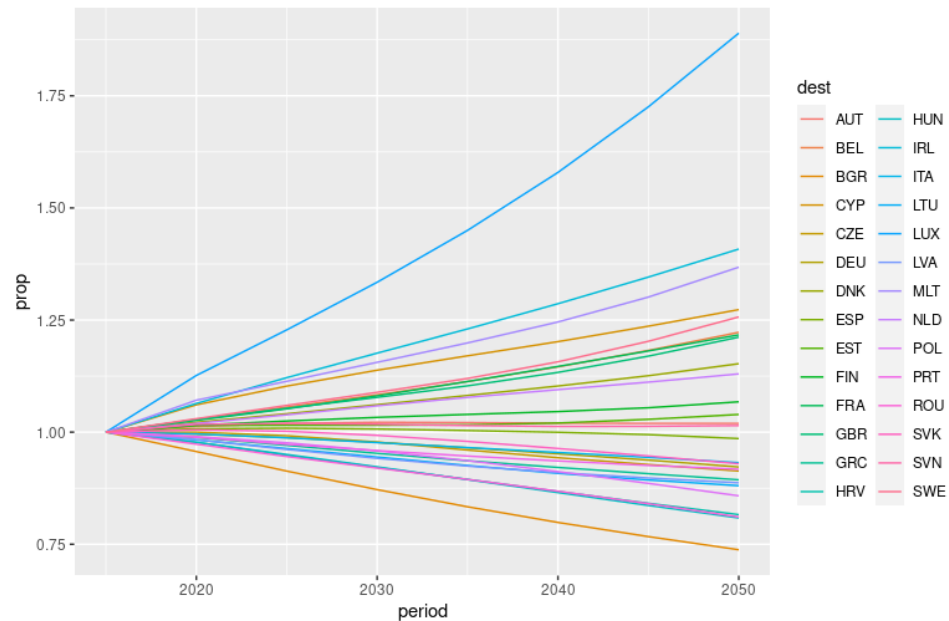


Relative population change

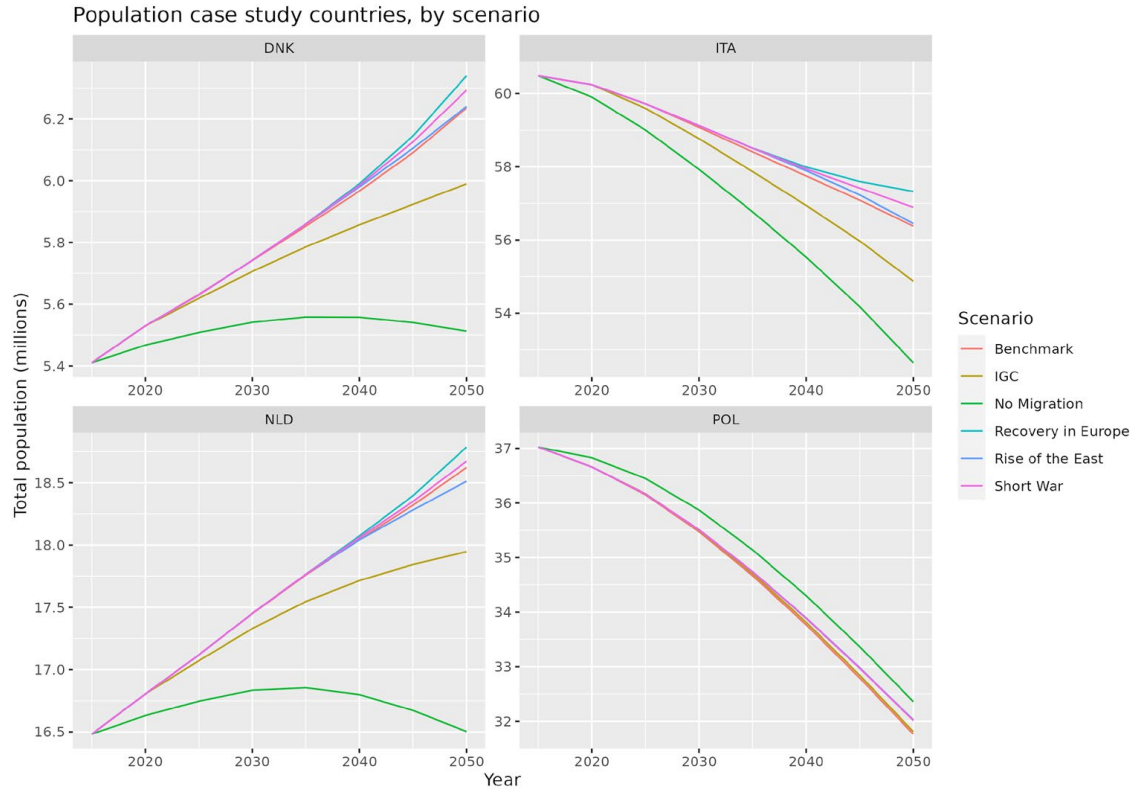
Relative change, No Migration



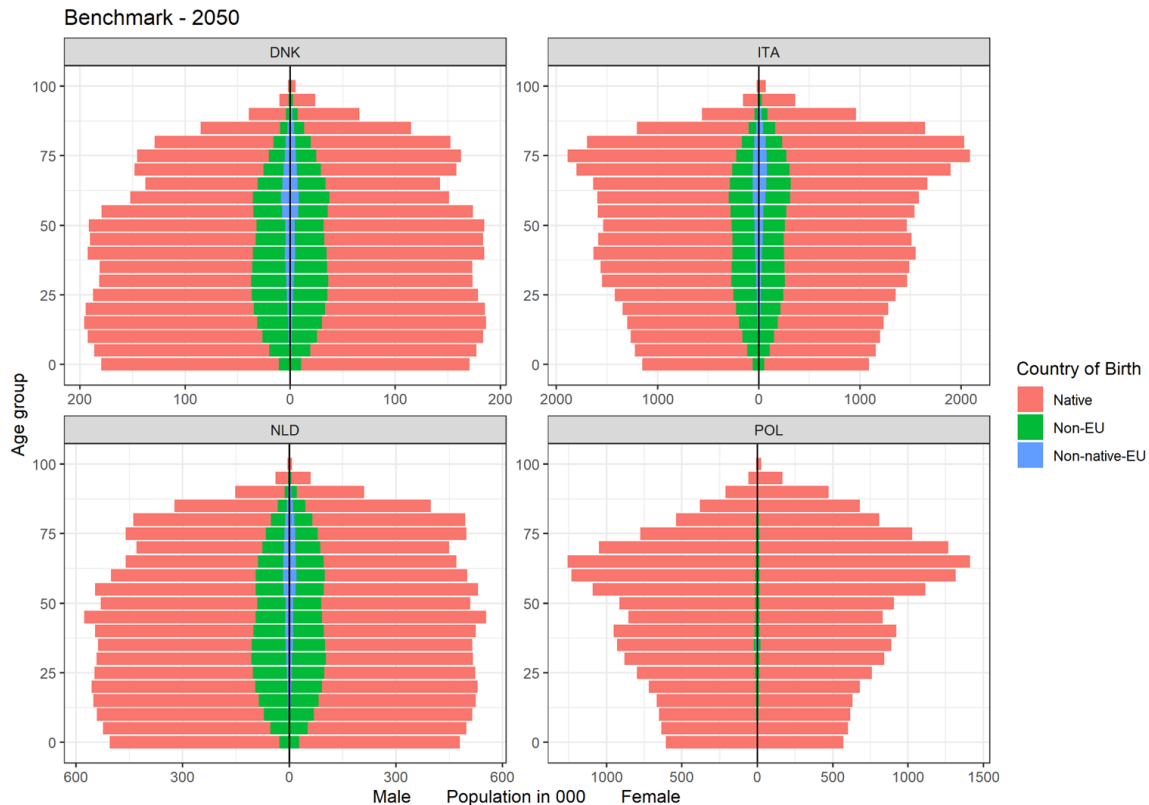
Relative change, Benchmark



Total population



Population, by place of birth



End