



This project has received funding from the European Union's Horizon 2020 Research and Innovation Programme under grant agreement No 870661



**HumMingBird**

# Migration projections: Potential uses and concerns

Tuba Bircan  
Interface Demography – Vrije Universiteit Brussel

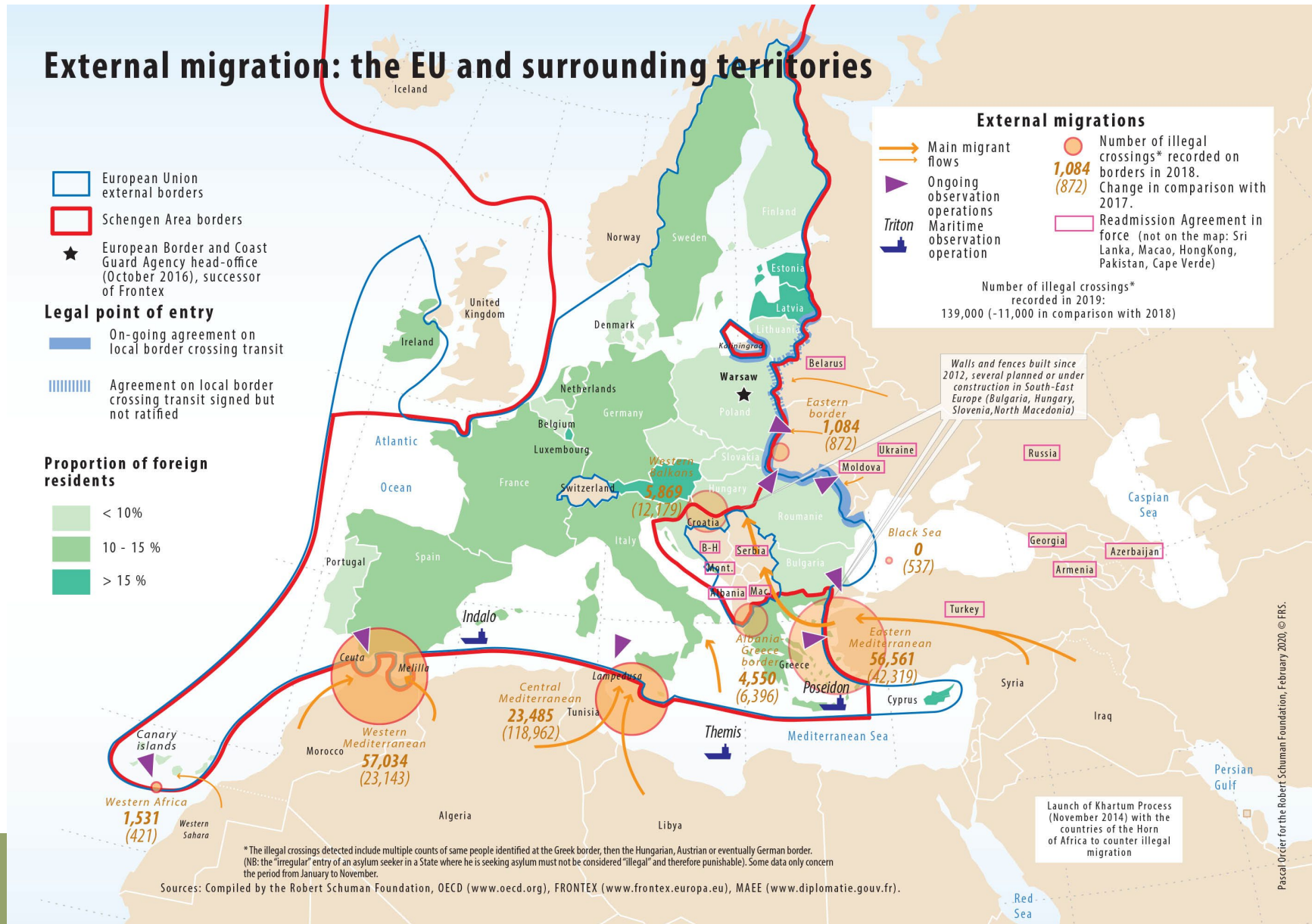
26/04/2023  
“Future of Migration to Europe” Joint Conference

# Future Migration Trends

- **Early warning systems**
  - quantitative and qualitative data to monitor potential drivers and movements of populations in real time to provide short-term estimations in fast-changing contexts (Carammia and Dumont, 2018).
- **Forecasting**
  - *quantitative modelling* methods with a medium and long-term horizon (Bijak, 2011; Disney, 2015).
- **Foresight/Scenarios**
  - qualitative scenario methods to describe future migration flows and trends (Vezzoli et al., 2017; De Haas et al. 2010).



# EU pact on migration and asylum



sals. In line with the Council in several reform grants arriving at



Pascal Oriet for the Robert Schuman Foundation, February 2020, © FRS.

# EU pact on migration and asylum: **Quota Mechanism**

After triggering this mechanism, the Commission would **estimate the number of migrants** as well as the **needs of the labour market** and would propose a distribution plan between Member States, in proportion to their size and economy: 50% of the calculation based on GDP and 50% on population size.

The first country of entry would remain one of the criteria for deciding which country is responsible for handling asylum applications.

# EU pact on migration and asylum: **Security Concerns**

**EU:** The New Pact on Asylum and Migration places a strong emphasis on better management of external borders and returns, thus further strengthening the security dimension, which has been the main approach to migration management over the years, as [shown](#) by the introduction of the Schengen Information System (SIS), Eurodac, the Integrated System of External Vigilance, Frontex and readmission agreements with third countries.

## **Security Concerns of Migrants?**

# Better Data, Better Models, Better Projections

- Evidence-based migration policymaking



# Better Data, Better Models, Better Projections

- For whom?
  - Research as an arm for predictive migration policies
  - Our intellectual debt to current and future migrants
- By whom?
  - Interdisciplinarity
  - Mixed-methods
  - Towards a more “social” CSS



# Thanks!

Tuba.Bircan@vub.be

[www.hummingbird-H2020.eu](http://www.hummingbird-H2020.eu)  
@H20\_HumMingBird







## COORDINATOR

HIVA - Research Institute for Work and Society, KU Leuven (BE)

## PARTNERS

University of Utrecht, Department of Information and Computing Sciences (NL) • University of Salamanca, Faculty of Social Sciences (ES) • Otto-Friedrich-University of Bamberg, Geographic Migration and Transition Studies (DE) • CESSDA ERIC (NO) • EKKE - National Centre for Social Research (GR) • IEN - Institute of Economic Sciences, Data Center Serbia for Social Sciences (RS) • Malmö University, Malmö Institute for Studies of Migration, Diversity and Welfare (SE) • Turkcell Technology (TR) • GMV Innovating Solutions Ltd, Remote Sensing Services and Exploitation Platforms (UK) • MPG - Migration Policy Group (BE) • ENoMW - European Network of Migrant Women (BE) • White Research (BE) • University of Pisa, Department of Computer Science (IT) • CNR - National Research Council (IT) • VUB - Vrije Universiteit Brussel, Interface Demography, Department of Sociology (BE) • University of Zurich, Department of Social Anthropology and Cultural Studies (CH) • CILD - Italian Coalition for Civil Liberties and Rights (IT) • Caritas International (BE)

VISIT: <http://www.hummingbird-H2020.eu>

CONTACT US: [HumMingBird@kuleuven.be](mailto:HumMingBird@kuleuven.be)

FOLLOW US:

