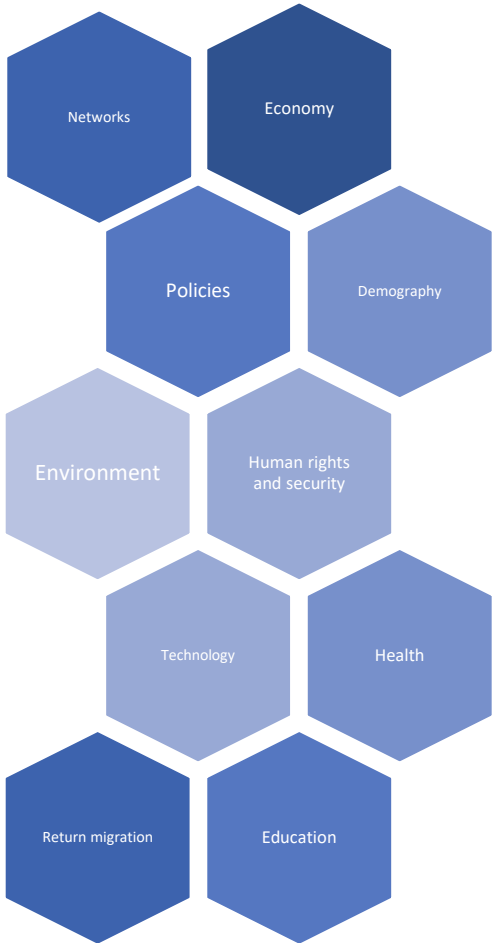
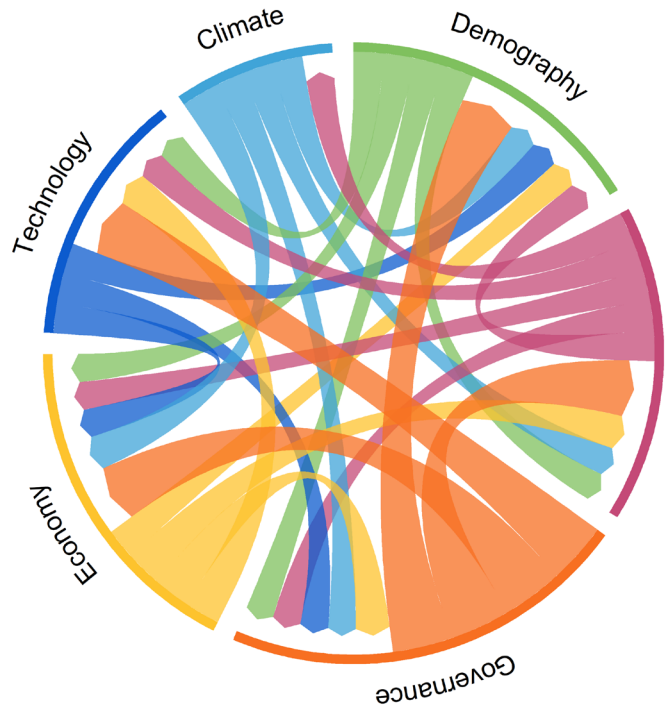


International migration drivers



Expert survey

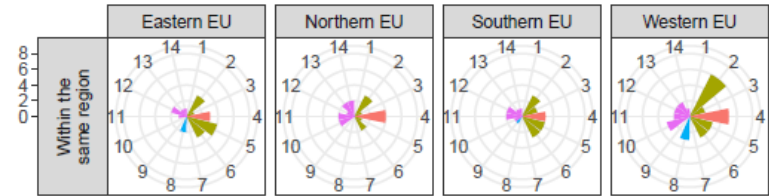


2030-2050

Two possible futures for each domain

Demand for migrants in EU
Pressure to migrate in developing countries

Delphi survey



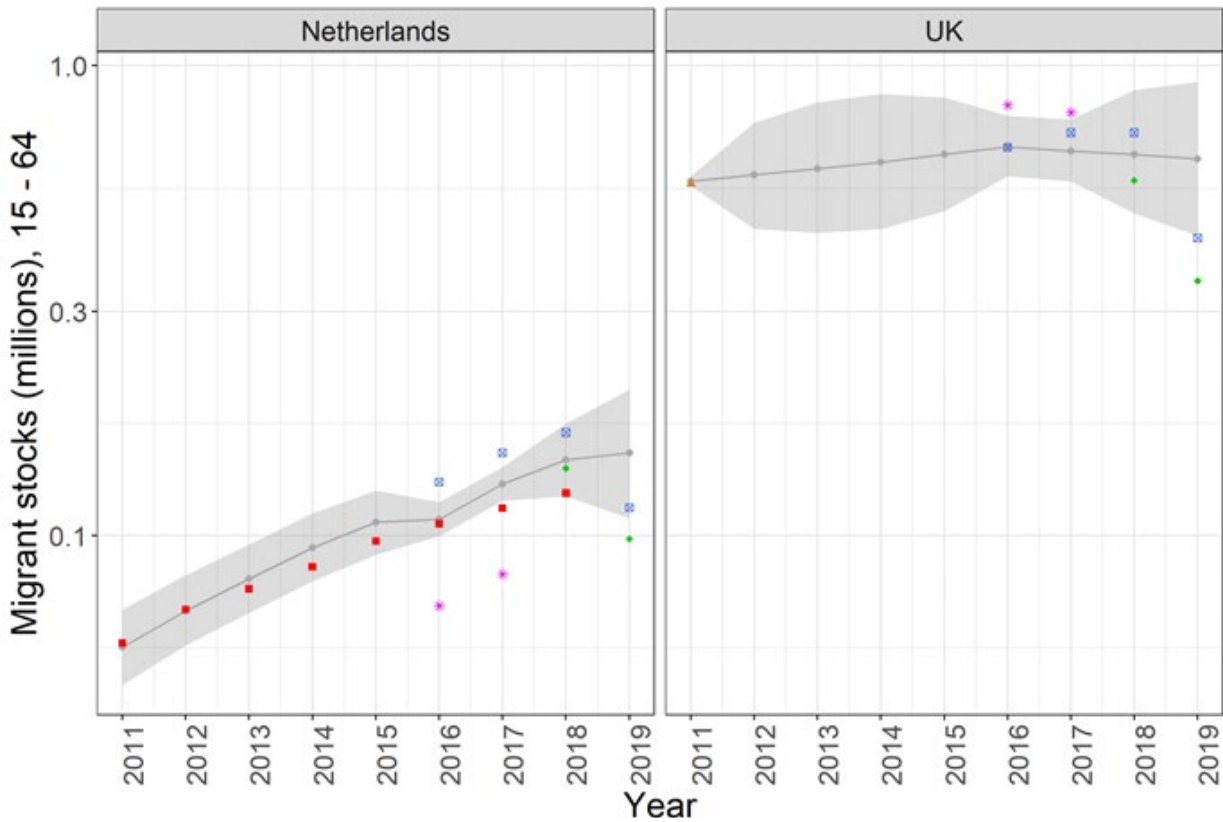
SKILLED						LOW SKILLED					
Origin/Destination	Eastern EU	Northern EU	Southern EU	Western EU	Total	Origin/Destination	Eastern EU	Northern EU	Southern EU	Western EU	Total
Eastern EU	3%	10%	3%	19%	36%	Eastern EU	4%	11%	13%	19%	46%
Northern EU	2%	7%	3%	2%	14%	Northern EU	2%	4%	4%	4%	13%
Southern EU	2%	17%	2%	15%	36%	Southern EU	0%	7%	2%	19%	28%
Western EU	2%	5%	2%	7%	15%	Western EU	0%	6%	4%	4%	13%
Total	8%	39%	10%	42%		Total	6%	28%	22%	44%	

INTRA-EU MIGRATION PATHS						INTRA-EU MIGRATION PATHS					
Origin/Destination	Eastern EU	Northern EU	Southern EU	Western EU	Total	Origin/Destination	Eastern EU	Northern EU	Southern EU	Western EU	Total
Asia	1%	7%	1%	13%	23%	Asia	5%	5%	8%	5%	22%
Balkans and Eastern Europe (non-EU)	4%	10%	3%	17%	35%	Balkans and Eastern Europe (non-EU)	6%	5%	5%	9%	25%
Latin America and the Caribbean	0%	0%	7%	0%	7%	Latin America and the Caribbean	0%	0%	6%	2%	8%
Middle East and North Africa	0%	1%	6%	4%	12%	Middle East and North Africa	0%	0%	8%	8%	15%
Northern America	0%	4%	1%	6%	12%	Northern America	0%	3%	0%	3%	6%
Sub-Saharan Africa	0%	3%	6%	3%	12%	Sub-Saharan Africa	0%	0%	12%	12%	25%
Total	6%	26%	25%	43%		Total	11%	12%	38%	38%	

2020-2030

Economic recovery

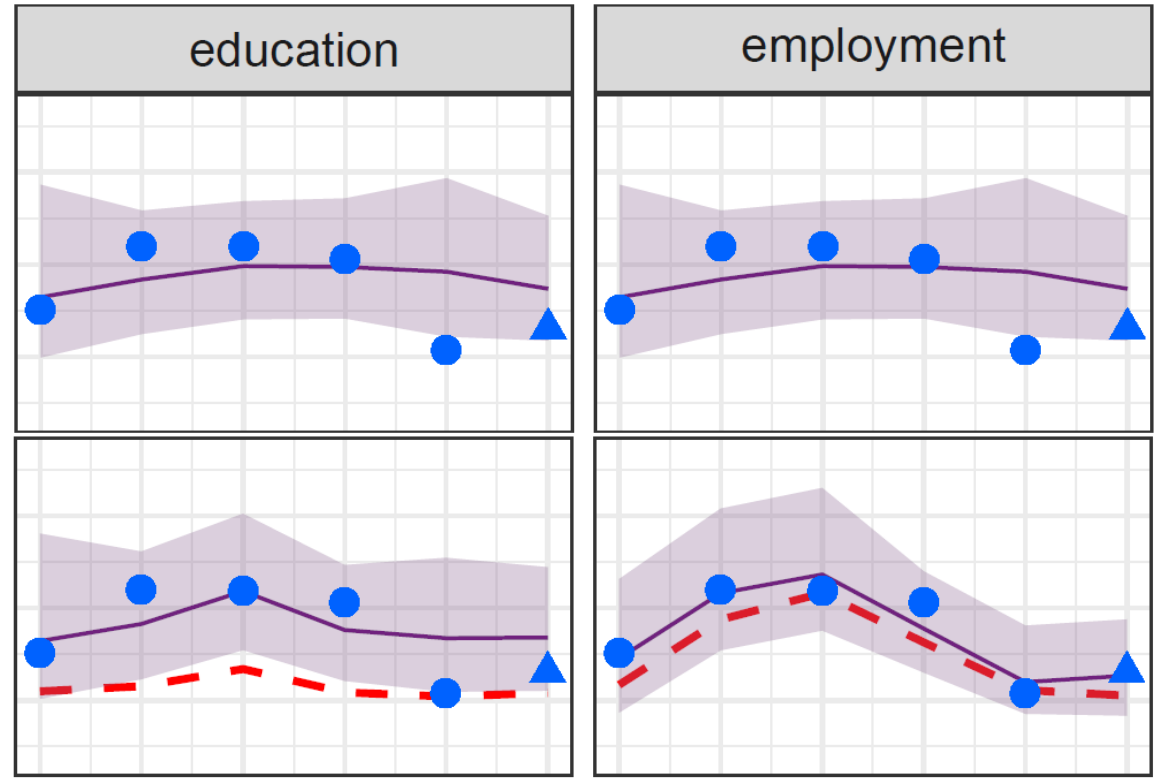
Impact of COVID-19 on migration policies



- Estimate
- ▲— Census (w. Missing)
- Eurostat (w. Missing)
- Facebook DAU (w. Missing)
- Facebook MAU (w. Missing)
- *— LFS (w. Missing)



Google searches-based index - - -
 What we now-cast ▲



Romania → United Kingdom flow